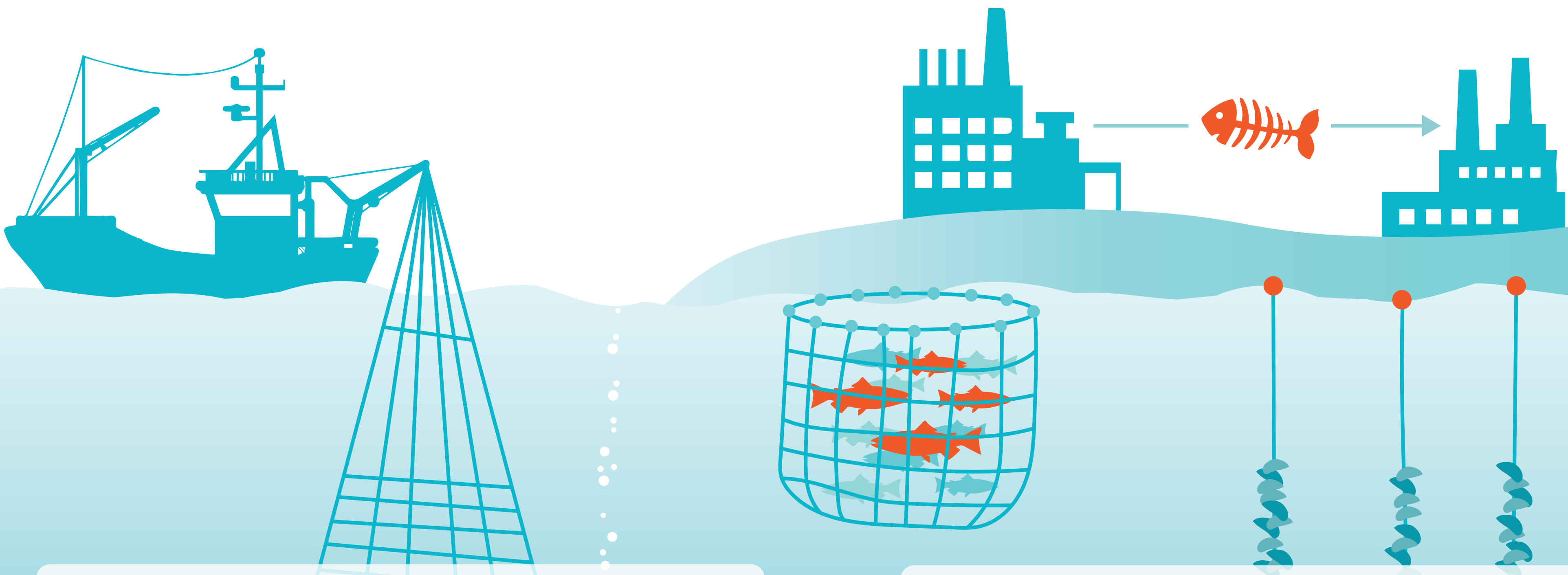


waseabi

Optimal utilization of seafood side-streams through the design of new holistic process lines



DEVELOPING:

- Technology, infrastructure and logistics
- Efficient and sustainable supply systems for aquatic side-streams
- Nutritional ingredients such as proteins, peptides, savoury ingredients and mineral supplements

QUICK FACTS:

- Project duration: 1 May 2019 to 30 April 2023
- Funding: EC contribution € 3,2 million, overall budget € 4 million
- Consortium: 3 research institutes/universities, 1 industry cluster and 9 companies from Denmark, Sweden, Belgium, France & Spain

www.waseabi.eu

Follow us



COORDINATOR



CONTACT:
Charlotte Jacobsen,
chja@food.dtu.dk
+45 23 27 90 75

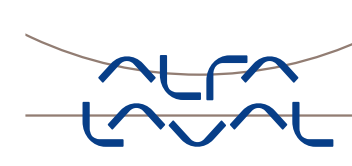
PARTNERS



Food & Bio Cluster
Denmark



MEMBER OF
BASQUE RESEARCH
& TECHNOLOGY ALLIANCE



This project has received funding from the Bio Based Industries Joint Undertaking (JU) under the European Union's Horizon 2020 research and innovation programme under grant agreement No 837726. The JU receives support from the European Union's Horizon 2020 research and innovation programme and the Bio Based Industries Consortium. This output reflects only the author's view and the JU cannot be held responsible for any use that may be made of the information it contains.

