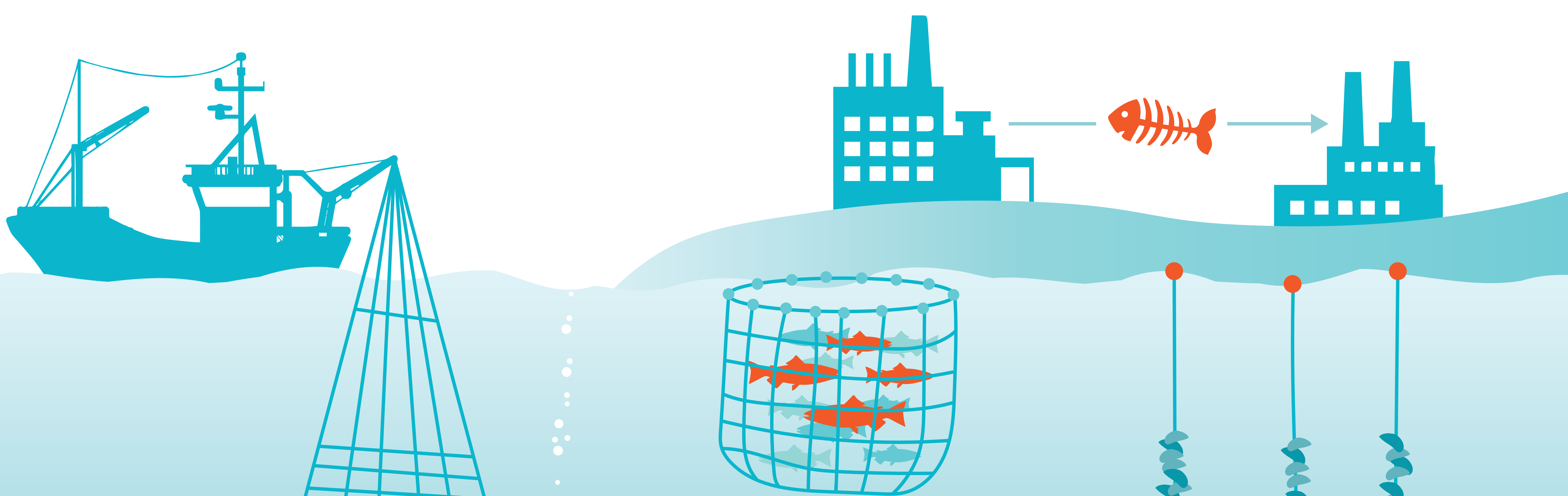




Optimal utilization of seafood side-streams through the design of new holistic process lines



ABOUT WASEABI

WaSeaBi is an EU-funded project that aims to develop and test new concepts, which will ensure that side-streams from aquaculture, fisheries and aquatic processing industries can be exploited for production of new products and ingredients.

The current exploitation of the aquatic biomass is much too low. Up to 70 % of the aquatic resources end up as side-streams, which are either used for low-value purposes such as animal feed or disposed of, which is costly for the companies involved. This calls for a more sustainable and commercially attractive exploitation of the fish and other aquatic products. WaSeaBi takes up this challenge.

DEVELOPING:

- Technology, infrastructure and logistics
- Efficient and sustainable supply systems for aquatic side-streams
- Nutritional ingredients such as proteins, peptides, savoury ingredients and mineral supplements

QUICK FACTS:

- Project duration: 1 May 2019 to 30 April 2023
- Funding: EC contribution € 3,2 million, overall budget € 4 million
- Consortium: 3 research institutes/universities, 1 industry cluster and 9 companies from Denmark, Sweden, Belgium, France & Spain

www.waseabi.eu

Follow us  

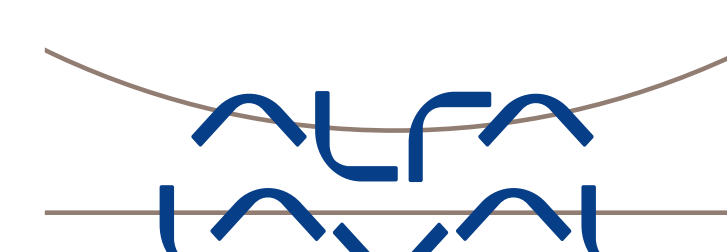
COORDINATOR



CONTACT:

Charlotte Jacobsen
chja@food.dtu.dk
+45 23 27 90 75

PARTNERS



This project has received funding from the Bio Based Industries Joint Undertaking (JU) under the European Union's Horizon 2020 research and innovation programme under grant agreement No 837726. The JU receives support from the European Union's Horizon 2020 research and innovation programme and the Bio Based Industries Consortium. . This output reflects only the author's view and the JU cannot be held responsible for any use that may be made of the information it contains.